

**730
THIRD
AVENUE**

FLOOR 24

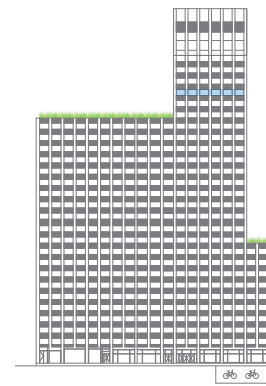
Core and Shell

Typical High Density Open Work

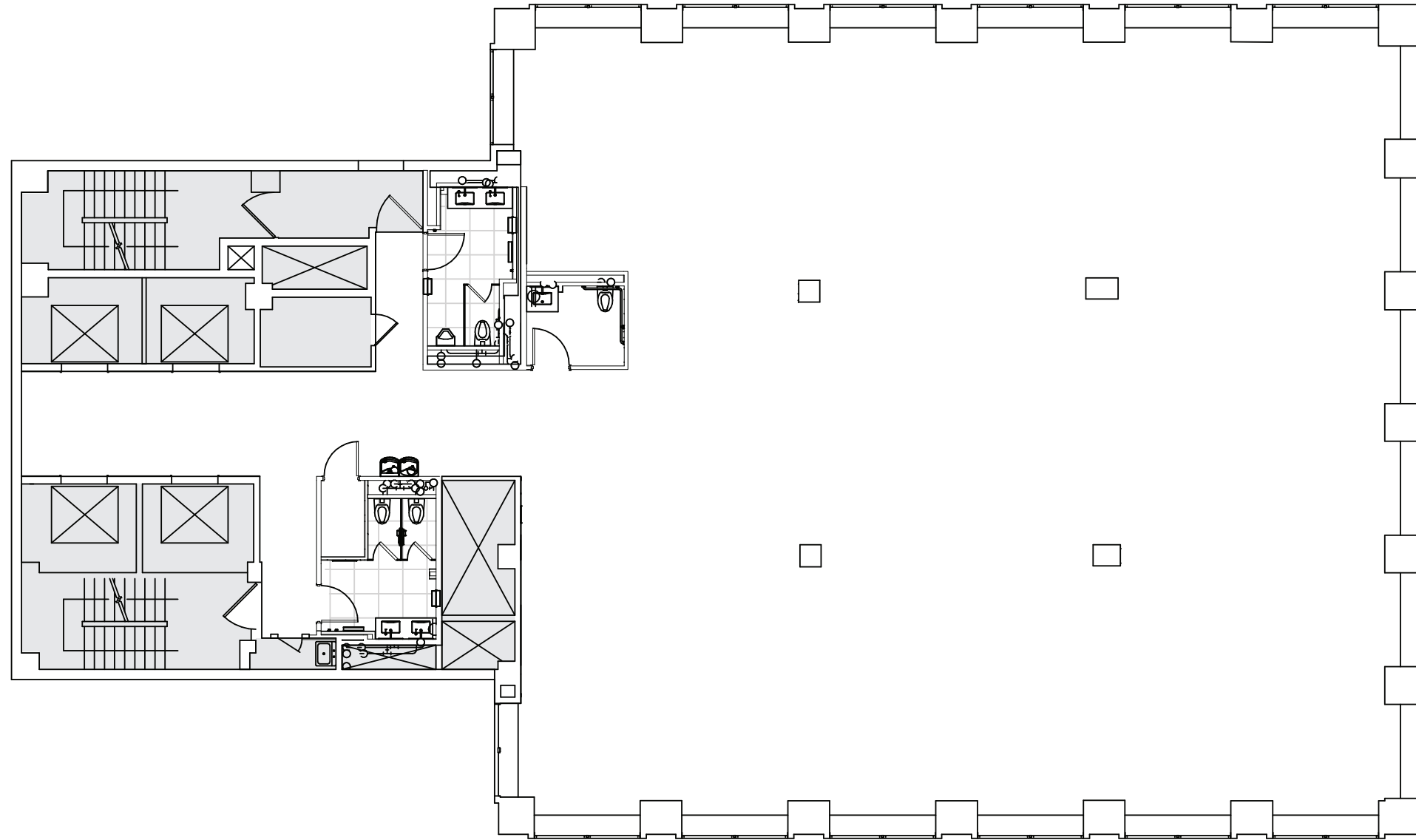
Typical Office Intensive

730 THIRD AVENUE

FLOOR 24 Core & Shell



8,424 RSF



Third Avenue

East 45th Street

LEASING AGENTS

Paul J. Amrich
Vice Chairman
212.984.8122
paul.amrich@cbre.com

Neil V. King III
Vice Chairman
212.984.8352
neil.king@cbre.com

Emily A. Jones
Executive Vice President
212.984.6537
emily.jones@cbre.com

730 Third Avenue, New York, NY, 10017
730third.com

OWNER: **nuveen**
REAL ESTATE

DEVELOPMENT ADVISOR: **TACONIC**
PARTNERS

EXCLUSIVE LEASING AGENT: **CBRE**

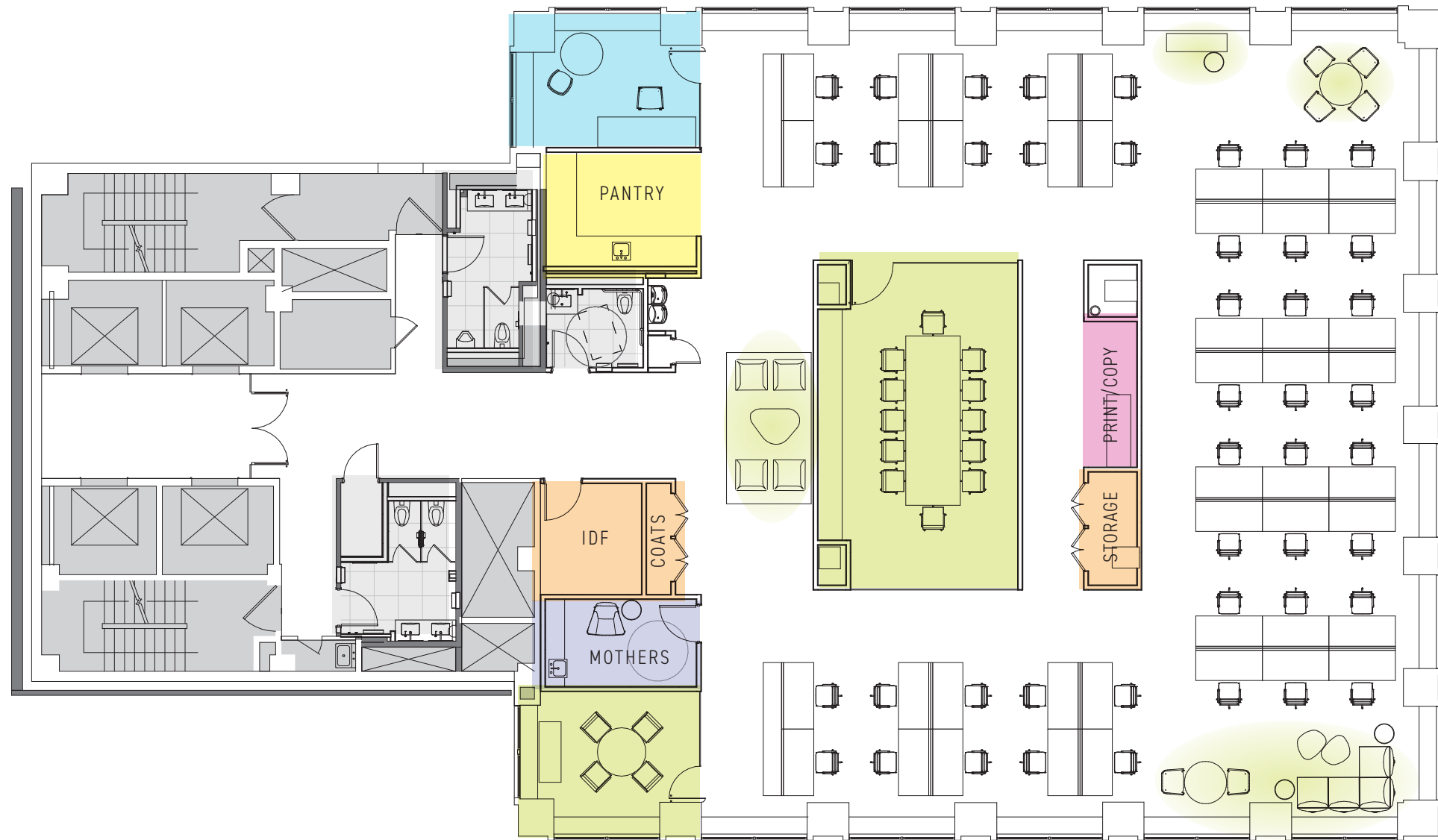
730 THIRD AVENUE

FLOORS 22-27

Typical High Density Open Work



Work Seats	
Offices:	1
Workstations:	44
Total	45
Collaborative Seats	
Small Conference:	4
Large Conference:	12
Open Collaboration:	14
Total	30
Support	
Phone Rooms	0
Cafe/Pantry	1
Mothers Room	1
Print/Copy	1
IDF	1
Coats/Storage	2
Approximate RSF	8,424
Approximate RSF/Seat	187



Third Avenue

East 45th Street

LEASING AGENTS

Paul J. Amrich
Vice Chairman
212.984.8122
paul.amrich@cbre.com

Neil V. King III
Vice Chairman
212.984.8352
neil.king@cbre.com

Emily A. Jones
Executive Vice President
212.984.6537
emily.jones@cbre.com

730 Third Avenue, New York, NY, 10017
730third.com

OWNER: **nuveen**
REAL ESTATE

DEVELOPMENT ADVISOR: **TACONIC**
PARTNERS

EXCLUSIVE LEASING AGENT: **CBRE**

730 THIRD AVENUE

FLOORS 22-27

Typical Office Intensive



Work Seats	
Offices:	12
Workstations:	4
Receptionist:	1
Total	17
Collaborative Seats	
Medium Conference:	0
Large Conference:	14
Total	14
Support	
Phone Rooms	0
Cafe/Pantry	1
Mothers Room	1
Print/Copy	1
IDF	1
Coats/Storage	1
File Area/Storage:	1
Approximate RSF	8,424
Approximate RSF/Seat	496



Third Avenue

East 45th Street

LEASING AGENTS

Paul J. Amrich
Vice Chairman
212.984.8122
paul.amrich@cbre.com

Neil V. King III
Vice Chairman
212.984.8352
neil.king@cbre.com

Emily A. Jones
Executive Vice President
212.984.6537
emily.jones@cbre.com

730 Third Avenue, New York, NY, 10017
730third.com

OWNER: **nuveen**
REAL ESTATE

DEVELOPMENT ADVISOR: **TACONIC**
PARTNERS

EXCLUSIVE LEASING AGENT: **CBRE**

© 2019 CBRE, Inc. All rights reserved. This information has been obtained from sources believed reliable, but has not been verified for accuracy or completeness. You should conduct a careful, independent investigation of the property and verify all information. Any reliance on this information is solely at your own risk. CBRE and the CBRE logo are service marks of CBRE, Inc. All other marks displayed on this document are the property of their respective owners, and the use of such logos does not imply any affiliation with or endorsement of CBRE.

730 Third Avenue
New York, 10017

730third.com
